

THE ASSEMBLY HOUSE

Welcome to our House... perfectly situated in the heart of Norwich, The Assembly House is the city's most prestigious address and has been the venue for legendary parties, dances, dinners, and celebrations throughout its glittering history.

We have 5 stunning rooms for your corporate meeting.

THE NOVERRE BALLROOM AND GARDEN

20.6m x 10.76m

The room can hold up to 240 theatre style and up to 100 cabaret
Room Hire starts at £500.00 (including VAT).

THE MUSIC ROOM

16m x 8m

The room can hold up to 150 theatre style and up to 60 cabaret
Room Hire starts at £500.00 (including VAT).

THE PIERCE ROOM

8.3m x 6.75m

The room can hold up to 40 theatre style and up to 24 cabaret
Room Hire starts at £250.00 (including VAT).

THE KENT ROOM

7m x 7m

The room can hold up to 30 theatre style and up to 24 cabaret
Room Hire starts at £250.00 (including VAT).

THE HOBART ROOM

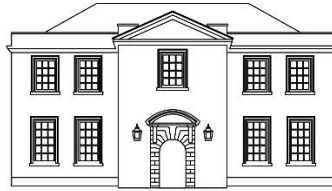
6.75m x 6.46m

The room can hold up to 24 theatre style and up to 18 cabaret
Room Hire starts at £250.00 (including VAT).

AV INFORMATION

We have plasma screens available in our smaller conference rooms which are 48", and a state-of-the-art AV system in the Noverre Ballroom.

You will need to bring your own laptop for your presentation to connect to our system, this is used in place of a projector. Your laptop must have either a VGA or HDMI port. We will provide both VGA and HDMI leads. If you wish to use an Apple Mac computer and it does not have a VGA or HDMI port you will need to bring the appropriate Apple adaptor for either an HDMI or VGA connection for your specific laptop.



THE ASSEMBLY HOUSE

DAILY DELEGATE RATE

£38.95 per person (Minimum number 14) includes room hire and VAT

Tea, coffee, biscuits and fruit on arrival

Mid-morning break of tea, coffee and biscuits

Sandwich lunch and orange juice consisting of the following:

A selection of flavoured wraps filled with;

Coronation chicken (DF, contains nuts)

Egg mayonnaise and cress (V, DF)

Hummus, red pepper and rocket (V, DF, Vg)

Cos lettuce, guacamole (V,DF, Vg)

White, wholegrain and wholemeal sandwiches of;

Honey-roasted ham and wholegrain mustard

Cheese and apple chutney (V)

Cream cheese and cucumber (V)

Poached salmon, lemon and cream cheese

Warm sausage rolls

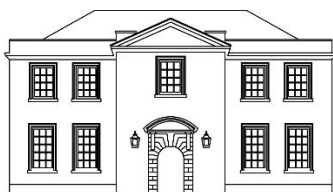
Tomato, basil and mozzarella muffins (V)

Pesto palmiers (Vg)

Squashage Rolls (Vg)

Fries, mayonnaise, ketchup

Mid-afternoon break of tea, coffee and cake



THE ASSEMBLY HOUSE

ROOM AND TWO COURSE LUNCH

£45.00 per person (minimum number 14) includes room hire and VAT

Tea, coffee and fruit on arrival

Mid-morning break of tea, coffee and biscuits

Rosemary roasted free range chicken breast, chipolata with bacon, sage and onion stuffing, dauphinoise potato, glazed carrots, watercress, roast chicken gravy GF DFa

Or

Butternut squash, sage and chestnut Wellington, apple sauce, roasted new potatoes, glazed carrots, beetroot and lentil gravy VG GFa DF

Soft Italian chocolate cake, sea salt caramel, honeycomb, white chocolate fudge, raspberries, crème fraiche GF DFa

Or

Roasted spiced pineapple tarte tatin, vegan vanilla ice cream, rum caramel, fresh mint VG DF GFa

Mid-afternoon break of tea, coffee and cake

Please note, we handle numerous allergens in our kitchens and due to the potential for cross contact, we cannot guarantee that our food is free from any allergens including tree nuts. We do not declare every ingredient used within a dish on this menu, and recipes may be subject to change. If you have an allergy, please let us know when booking and before ordering so we can provide you with an allergy information in relation to the 14 legally defined allergens.